





DTC (Diagnostic Trouble Code) Output

NOTE:

- If there is a DTC recorded, the ABS indicator light repeatedly flashes in a cyclic manner. (However, when five minutes have elapsed from the start of self-diagnosis mode, the output of the DTC will be interrupted.)
- If no DTC is recorded, the light repeats flashing for 3.6 seconds in a cyclic manner.
- In the case that the mode select switch is turned OFF or the vehicle speed (both wheels) exceeds 10 km/h (6.2 mile/h), the output of DTC will be interrupted.
- Don't disconnect couplers from ABS HU, the battery cable from the battery, ABS HU ground wire harness from the engine or main fuse before confirming the malfunction code (self-diagnostic trouble code) stored in memory. Such disconnection will erase the memorized information in ABS HU memory.
- Be sure to read [Precautions for Electrical Circuit Service](#) and [Precautions for ABS Service](#) before inspection and observe what is written there.
- After carrying out DTC deleting and ABS operation check, explain to the customer that the ABS is operating correctly. 

Use of Mode Select Switch

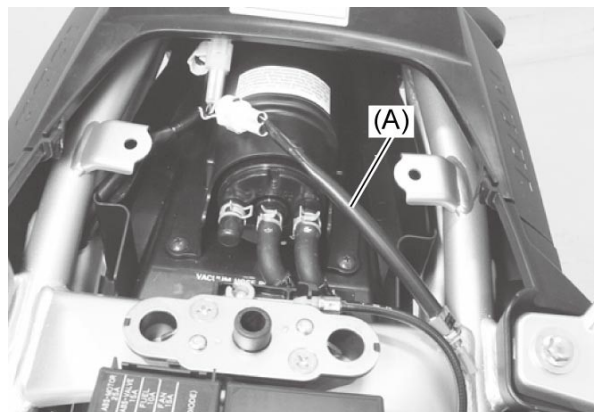
Connect the special tool to the mode select coupler to output the memorized DTCs on the ABS indicator light.

- 1) Turn the ignition switch OFF.
- 2) Remove the seat. 
- 3) Connect the special tool to the mode select coupler (1).

Special Tool

(A): [09930-82760](#)





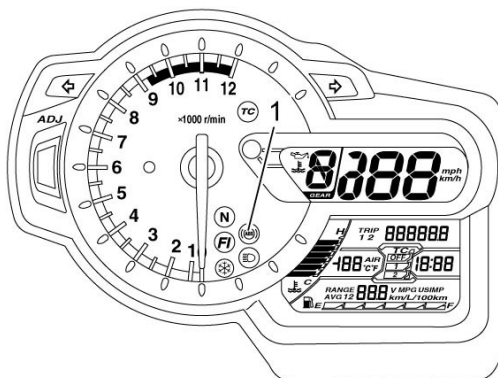
- 4) Switch the special tool to ON.



- 5) Turn the ignition switch ON.
The ABS indicator light (1) starts flashing to indicate the DTC. 

NOTE:

If the DTCs are to be output for a long time, remove the HEAD-LO fuse in order to prevent the battery from discharging.



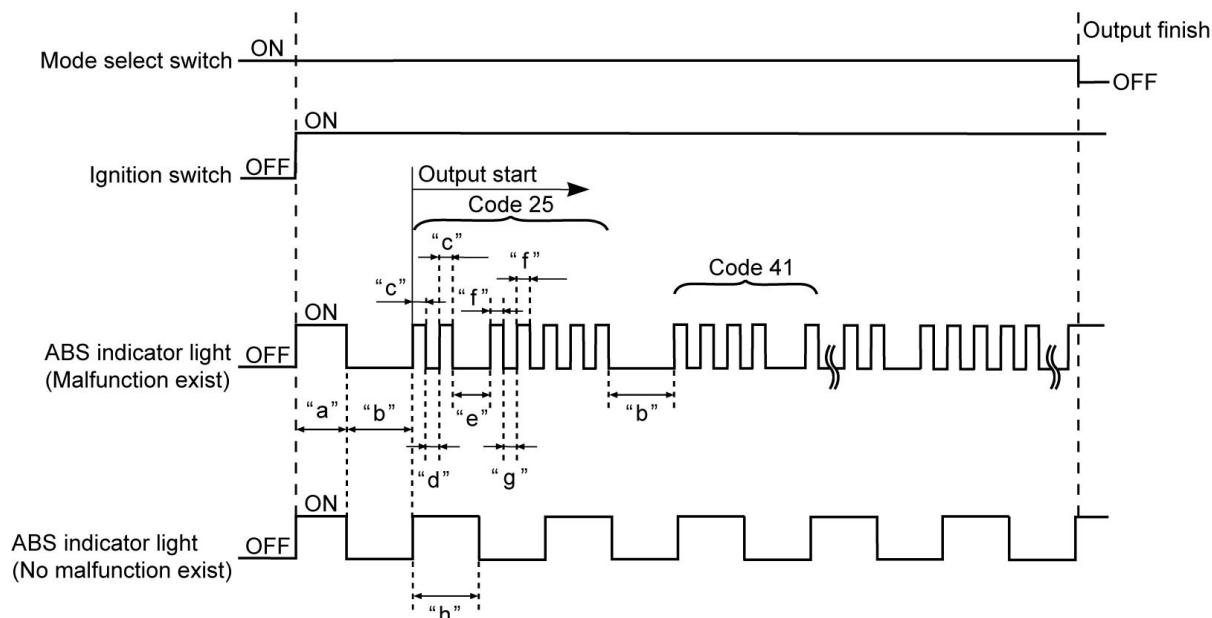
- 6) Turn the ignition switch OFF and disconnect the special tool.

7) Install the seat.

Understanding the DTC (Diagnostic Trouble Code)

A two-digit DTC is shown through the flashing pattern of the ABS indicator light. A number between 1 and 9 is represented by the number of times that the ABS indicator light lights up in interval of 0.4 seconds and the separation between the tens and ones are indicated by the light staying off for 1.6 seconds. In addition, the separation between the start code and the DTC is indicated by the light being off for 3.6 seconds. After the start code is displayed, DTCs appear from the smallest number code.

If no DTC is recorded, the light repeats flashing for 3.6 seconds in a cyclic manner.




"a": Initial minimum light ON time (About 2 seconds)	"e": Main-sub code interval (1.6 seconds)
"b": Error code interval (About 3.6 seconds)	"f": Sub code light ON time (0.4 seconds)
"c": Main code light ON time (0.4 seconds)	"g": Sub code light OFF time (0.4 seconds)
"d": Main code light OFF time (0.4 seconds)	"h": About 3.6 seconds

Use of SDS

NOTE:

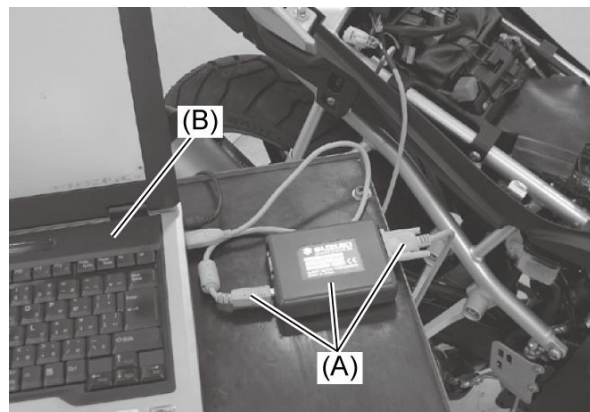
DTC stored in ABS HU memory can be checked by the SDS.

- 1) Remove the seat. 
- 2) Set up the SDS tool according to the SDS operation manual.

Special Tool

(A): **09904-41010**

(B): **99565-01010-034**



- 3) Read the DTC (Diagnostic Trouble Code) and show data when trouble (displaying data at the time of DTC) according to instructions displayed on SDS.

NOTE:

- **Not only is SDS used for detecting Diagnostic Trouble Codes but also for reproducing and checking on screen the failure condition as described by customers using the trigger.**
- **How to use trigger referring to the SDS operation manual for further details.**

- 4) Close the SDS tool and turn the ignition switch OFF.
- 5) Disconnect the SDS tool and install the seat. 